



FREMAX

***ACHIEVING
OUR BEST.
IT'S WHAT
MOVES US.***

FOR MORE THAN 35 YEARS,
FREMAX HAS BEEN
MANUFACTURING AND
SELLING PREMIUM AUTO
PARTS FOR OEM AND
AFTERMARKET THAT ARE
RECOGNIZED WORLDWIDE.



Our innovative automotive solutions are developed to ensure maximum safety for drivers and the highest quality for the work of its mechanical partners.

All processes are carried out with precision and agility, ensuring greater durability, high performance, and total reliability.

**FREMAX IS RECOGNIZED
BY THOSE WHO
UNDERSTAND BRAKES.**

FREMAX
ACHIEVING OUR BEST. THAT IS WHAT MOVES US.

FREMAX & FRAS-LE

CONSOLIDATION OF MARKET LEADERSHIP

IN 2018 FREMAX JOINED FRAS-LE,
MARKING A NEW ERA FOR THE
COMPANY AND THE AUTO
PARTS MARKET.

This merge expanded the company's operations in the global market. In Brazil it further consolidated its leadership position with a solid expansion of its portfolio, as well as increased logistics efficiency and commercial performance.

FREMAX



FREMAX

650
EMPLOYEES

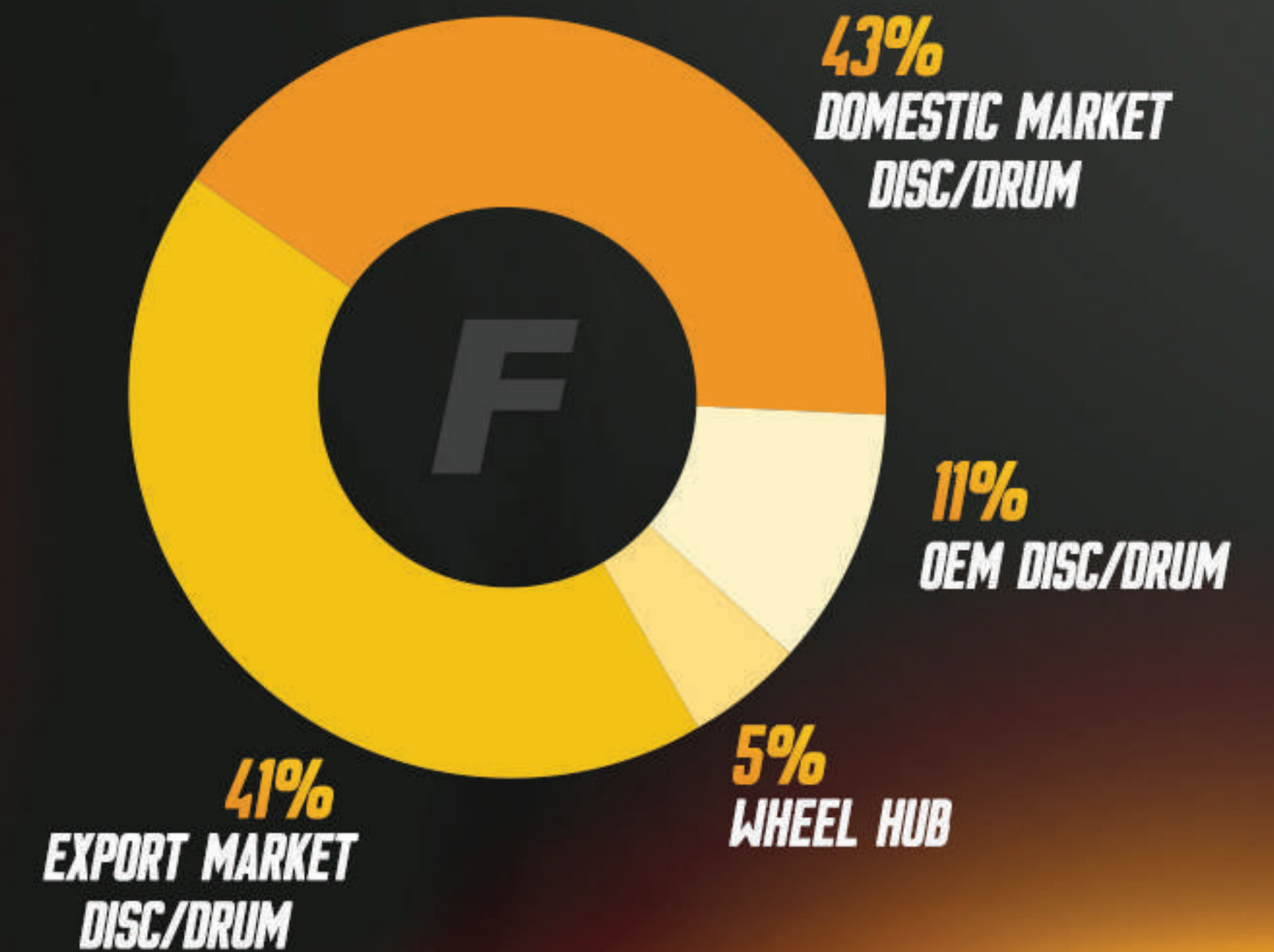
1 PLANT
IN JOINVILLE / SC

**CUSTOMERS IN
MORE THAN
70 COUNTRIES**

5 MILLION
PARTS PRODUCED
ANNUALLY

28,21%
GROWTH IN
2019 X 2018
REVENUE

REVENUE SHARE BY FAMILY/PRODUCT GROUP:



PRESENT IN EVERY CONTINENT

PERFORMANCE WITH
GLOBAL DISTRIBUTION
AND LOGISTICS POWER.



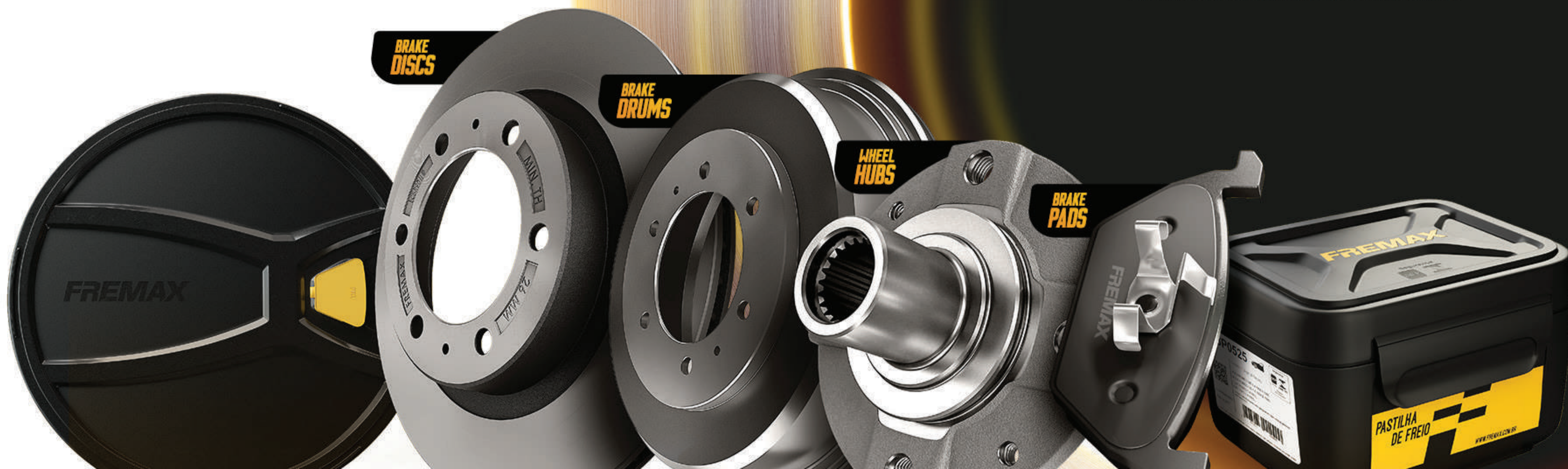
INDUSTRIAL PARK WAREHOUSE COMMERCIAL OPERATION HOLDINGS

PORTFOLIO

ALWAYS AHEAD OF THE MARKET

Fremax has an agile and efficient product development process. This ensures that the constant launch of new items are always up to date with the safety standards of new vehicles on the market.

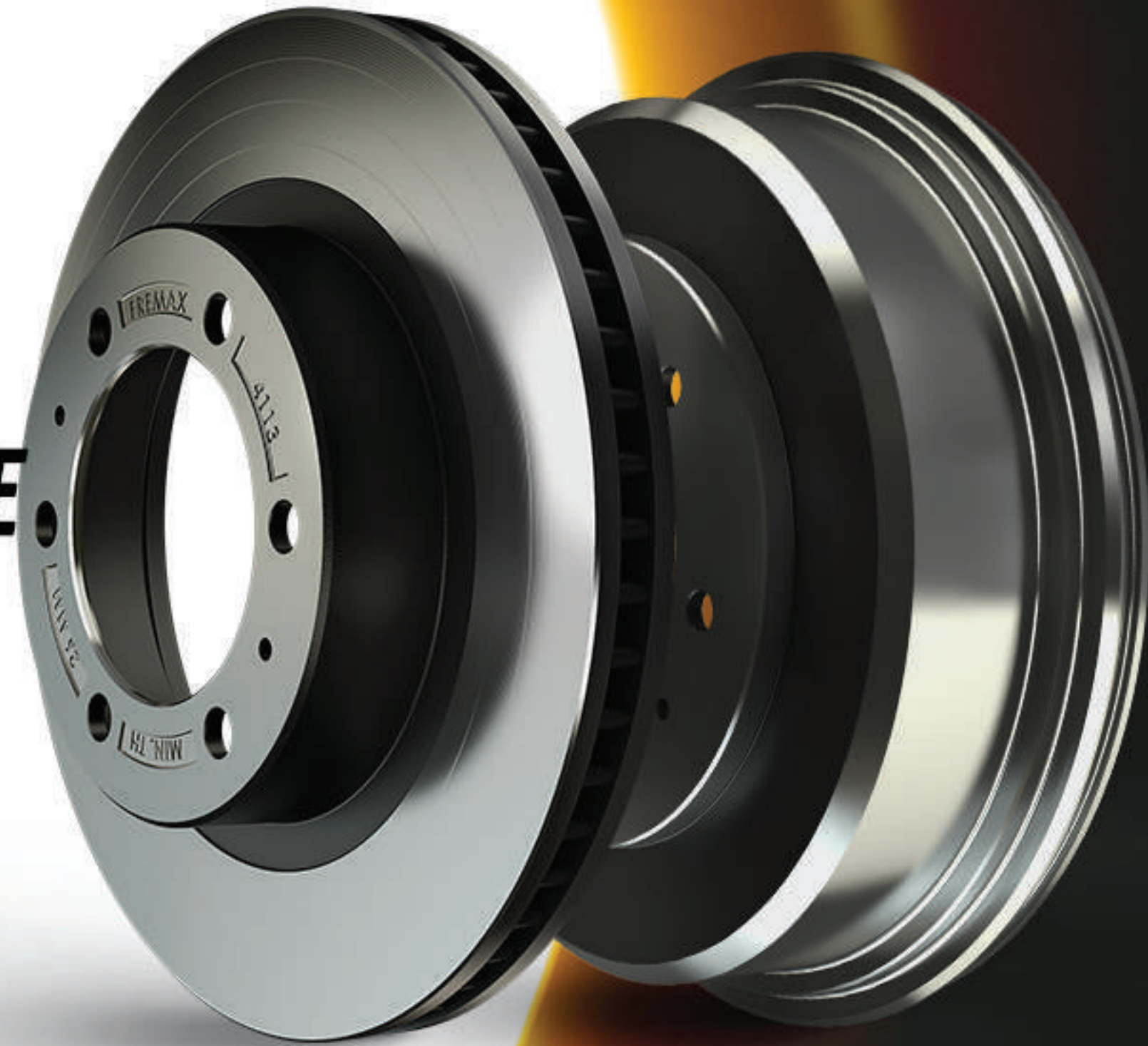
To check the complete portfolio you can access the AutoExperts catalog at www.autoexperts.parts.



BRAKE DISCS AND DRUMS

**MAXIMUM PERFORMANCE
ACROSS THE ENTIRE
PORTFOLIO**

FREMAX BRAKE DISCS AND
DRUMS HAVE EXCLUSIVE
AND INNOVATIVE
TECHNOLOGY THAT
GUARANTEES SAFETY
ON ANY TRACK.



5 MILLION brake discs and drums
are manufactured annually.
MORE THAN 1,900 items for
60,000 APPLICATIONS.

CARBON+

- 100% of the portfolio.
- Ensures greater braking performance and longer brake life.
- Thermal conductivity.
- Contributes to heat dissipation.

PAINTED DISC

- The entire portfolio with the disc hub painted black.
- Withstands temperatures up to 600°C.
- Offers corrosion protection.
- Preserves the aesthetics of the product and the vehicle.

STOP AND GO!

- Surface finish in the braking area with concentric grooves.
- Provides better and effective pre-settlement in the system.
- Significantly reduces noise or vibration.
- Eliminates the need to return for adjustments.

READY TO GO

- Application of water-based protective oil.
- No cleaning required before application.
- Does not contaminate pads and shoes.
- Saves time in maintaining the brake system.

WHEEL HUB

**HIGH LEVEL IN EVERY
GENERATIONS**

*Fremax Wheel Hubs are
manufactured to offer the best in
the market, guaranteeing safety
and maximum performance.*



**MATERIAL WITH LONG USEFUL LIFE.
MADE OUT OF FORGED STEEL.
VERSION WITH ALL COMPONENTS FOR ASSEMBLY.**



FREMAX

INNOVATION

**EXCLUSIVELY WITH
THE MARKET LEADER**



FREMAXKIT

*It assembles the necessary components for
the installation of brake discs and drums.
Saves inventory, space, and money.*

**INNOVATIVE PACKAGING,
WITH GREATER RESISTANCE
AND 100% RECYCLED MATERIAL.**

*Optimizes storage space, facilitates transport, and ensures product
conservation during storage, maintaining its original quality*



FREMAX

**THE MOST
EFFICIENT
AND STABLE
BRAKE
PADS**



POSITIVE MOLDING

Produced according to the high standards

**ASBESTOS
AND COPPER FREE**

PREMIUM SHIM

And precision cut backing plates

SCORCHING

FREMAX

MANUFACTURER OF ORIGINAL PARTS FOR AUTOMAKERS.



Fremax supplies the main automakers in Brazil, offering its own manufacturing technology that guarantees high strength, safety, and recognized quality.



The manufacturing of Fremax brake discs and drums follows standardized processes according to the ISO 9001 standard, which guarantees uniform quality and safety in the application of all products.



Certified by IATF 16949, Fremax meets all the quality requirements necessary for the manufacture of brake discs and drums for automakers worldwide..



SUCCESSFUL PARTNERSHIP IN MOTORSPORTS

EXCLUSIVELY WITH
THE MARKET LEADER

STOCK CAR BRASIL

Since 2003, Fremax is the Official and Exclusive Supplier of Stock Car, the most important category of Brazilian motorsports.

OFFICIAL EXCLUSIVE SUPPLIER
OF COMPETITION BRAKE DISCS.

PORSCHE GT3 CUP CHALLENGE BRASIL

Fremax offers full support to track teams, and after each race it analyzes the performance of the brake discs to further improve their performance.

MERCEDES-BENZ CHALLENGE

One of the fastest categories in the country has Fremax equipping all its cars, providing maximum safety and efficiency when braking.



STOCK CAR

PORSCHE
GT3 CUP CHALLENGE



FREMAX IS THE BRAND OF BRAKE DISCS CHOSEN TO ENSURE THE SAFETY OF THE DRIVERS ON THE TRACKS OF THE MAIN CATEGORIES OF SOUTH AMERICAN MOTORSPORTS, ALSO EQUIPPING THE OLD STOCK AND SPRINT RACE CARS. IT IS THE SAFE CHOICE FOR THE MOST DEMANDING TEAMS.



FREMAX

SOCIAL RESPONSIBILITY

ADOPTION OF EDUARDO KOEHLER MUNICIPAL SCHOOL.

Fremax participates in the communities where it operates because it believes that well-being and professional training create the ideal environment for growth and innovation. Over 20 years ago Fremax adopted the Evaldo Koehler School.

The project bears the costs of predictive and electrical maintenance, IT support, gardening services, furniture, and the supply of inputs and appliances. In addition to the full cost of telephone, internet and printers, while supplying transportation for student educational field trips.

**THIS IS FREMAX'S COMMITMENT:
INNOVATE TO DO OUR BEST.**

FREMAX



ENVIRONMENTAL RESPONSIBILITY

www.fremax.com

Monitoring of atmospheric emissions, air and water quality (underground and surface), noise levels, and waste separation for ecologically appropriate disposal. These are some of the indicators that allow Fremax to seek continuous improvement and the permanent development of actions that reduce the use of natural resources and the impact on the environment.

OTHER INITIATIVES:

• **NEW EXHAUST SYSTEM.**

Installation of an exhaust system capable of capturing particulate materials by means of bag filters, ensuring higher efficiency rates.

• **NEW TREATMENT PLANT AND WASTE CENTER.**

Installation of a new treatment plant with superior technology for removing pollutants and a larger waste plant for separation and organization of waste.

• **"LACRE" AND "TAMPA DO BEM" PROJECTS.**

Their goal is to boost recycling and provide improvement in the quality of life for people with disabilities (Donation to APAE that accumulates donations and exchanges for wheelchairs) and abandoned animals (Donation to the Guapecas institution that exchanges them for feed or to pay for surgeries, medication, etc.).

• **100% RECOVERY OF FOUNDRY SAND.**

Reuse of sand is already used in the metal casting process.

**THIS IS FREMAX'S COMMITMENT:
INNOVATE TO DO OUR BEST.**

FREMAX


**RECOGNIZED BY
THOSE WHO
UNDERSTAND BRAKES.**

We are in a leading position and are always looking for new solutions and technologies to offer you the maximum quality and convenience. OUR EFFORT IS PUT TOWARDS EARNING THE APPROVAL OF THOSE WHO UNDERSTAND BRAKES THE MOST: MECHANICS.


ACHIEVING OUR BEST. IT'S WHAT MOVES US.

FREMAX

www.fremax.com

 [FremaxBrasilOficial](#)

 [@fremaxbrasil](#)

 [Fremax Brakes](#)